

## VDH XLR MACHINE

In addition to selling equipment, Van den Heuvel (VDH) is perfectly capable of designing and building high-quality machines. For companies that want to carry out pile driving, vibratory and drilling work – especially for heavier jobs that require more capacity – VDH offers the XLR machine.

### ENORMOUS CAPACITY AND STABILITY

The VDH XLR machine is a custom-made piling/drilling rig (often with a crane as base machine), especially designed for larger projects. Examples include civil engineering structures (bridges and viaducts) and other large infrastructure works. The XLR machine's long fixed leader, heavy-duty hanging point and high stability make it stronger and more multifunctional and therefore suitable for heavy foundation work. The special pipe leader or closed lattice leader makes the machine suitable for drilling. The machine itself has a high tractive force and more capacity than a PD/PDX machine, enabling it to effortlessly pull pipes out of the ground.

### LARGE INCLINATIONS

VDH uses a standard premium-brand crane as basic machine and converts it in the VDH workshop. The machine gets a fixed leader without boom, which means it can no longer be used for lifting work but is suitable for driving precast piles, vibro piles and MW piles, as well as all the vibration-free drilled pile systems. The VDH XLR machine is extremely stable, both when driving vertically and inclined. Large inclinations can also be achieved, even laterally. Forwards and backwards, the maximum inclinations are 3:1. With some modifications, the machine can operate backwards-leaning in the 1:1 position.

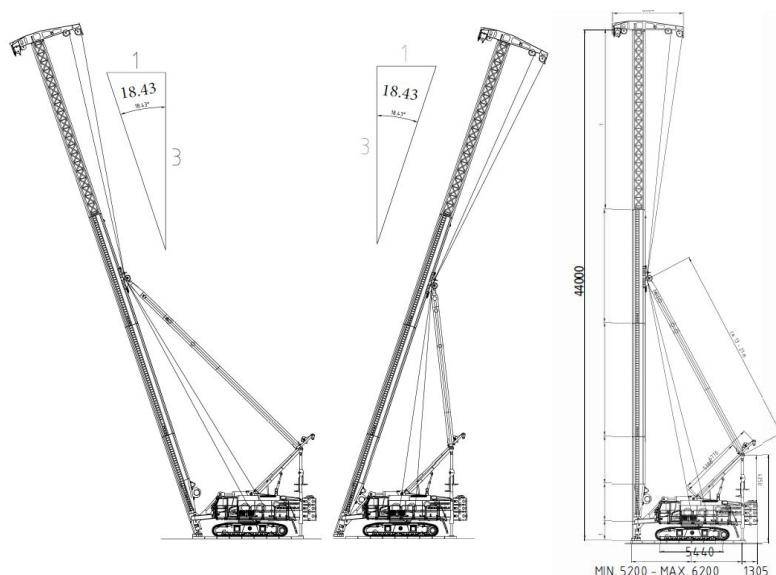
### CUSTOM SOLUTIONS TO MEET CUSTOMER REQUIREMENTS

VDH, a specialist in the field of modifications in the foundation sector, recommends the most suitable solution (brand-independent) and carries out the machine conversion from start to finish. The team of skilled engineers designs, draws and calculates, completely according to the customer's requirements and to suit the work it will be used for. The skilled staff in the workshops and paint shop create a high-quality finished product from the design. The VDH XLR is available as a 130 tonne machine (with a maximum leader length of 44 metres) or a 180 tonne machine (with a maximum leader length of 52 metres).

### PRODUCTION IN OUR WORKSHOPS

In our fully equipped metal and hydraulic workshops and paint shop, we employ skilled welders, mechanics and paint sprayers who ensure that you get a top-notch end product. The welding, hydraulics and assembly of the piling rigs and appliances are all completed here. The piling rigs and appliances are then treated in our paint shop to preserve them.





### BENEFITS OF THE VDH XLR PILING RIG:

- Strong, large capacity, stable and multifunctional
- Suitable for larger and heavier foundation works
- Fixed long leader without boom
- Can be made suitable for drilling work
- Configurable as 130 and 180 tonne machine
- Standard maximum inclination 3:1
- Special version achieves backwards-leaning 1:1 position
- EN 16228 certified

Once the machine is built, everything is carefully tested and certified (EN 16228) so it meets the established standards and requirements. The customer receives a complete package with which they can get started straight away.



### READY FOR THE FUTURE

Van den Heuvel designs, modifies and builds various types of high-quality machines for special applications. VDH is therefore a successful partner in the foundation sector. Production and modification take place entirely in-house, using state-of-the-art equipment, with expertise developed over many years. Everything is taken care of for the customer throughout the process, from the initial request to delivery of the machine, service and maintenance. Custom solutions result in perfect basic machines, which can be adapted to the needs of the customer or project.

