

## VDH SHEET PILER – 4-SECTION MAST

The VDH Sheet Piler is a versatile sheet pile driving machine, suitable for vibrating and pressing various types of sheet piles. The biggest difference compared to the traditional method of installing sheet piles – with a crane and vibratory hammer – is that this machine can also provide compressive prestress on the sheet piling, which increases efficiency.

### 4-SECTION MAST

The mast, which consists of four sections including jib, can reach a total height of 20 metres. The machine's undercarriage can be hydraulically widened to a maximum outer dimension of 5 metres, which provides extra stability during the work. The VDH Sheet Piler is also available with a hydraulic telescopic mast.

### HYDRAULICALLY DEMOUNTABLE POWER PACK

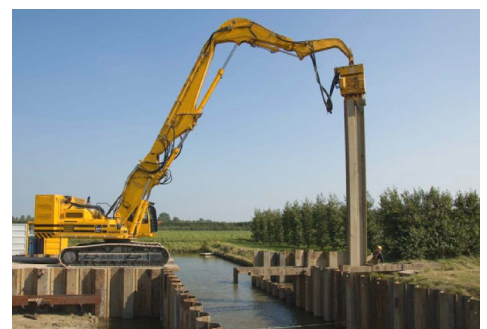
In place of the original ballast weight, Van den Heuvel has developed a special weighted frame, on which the power pack is placed. Hydraulic cylinders at the back of the frame make it easy to remove the power pack. This reduces the transport weight, for cost-efficient transport. The power pack with frame also serves as a counterweight. Depending on the machine's power rating, Van den Heuvel gives you the choice of a separate power pack and separate vibratory hammer. This ensures that the latest requirements can always be met. The combination in which the drive runs via the vibratory hammer provides optimum performance. All VDH machines in production today are powered by a Stage V engine.

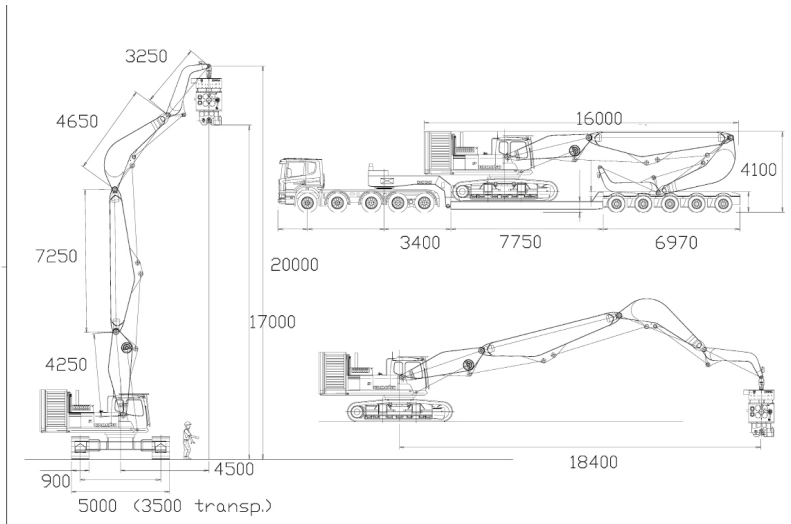
### VERSATILE POWERHOUSE

With a maximum height of 20 metres and a weight of 64,000 kg, the VDH Sheet Piler is a true powerhouse. A good basic machine is therefore required. An excavator in the 50 tonne class lends itself well to this. This sheet piler, which was developed by Van den Heuvel in-house, can be modified to meet the customer's requirements. For example, the machine is optionally available with a tilting cabin, so the operator has a better view of the work during pulling or placing sheet piling, which improves safety. The machine is CE certified, carefully tested by a notified body and approved for use as a foundation piling machine (NEN-EN 16228).

### PRODUCTION IN OUR WORKSHOPS

In our fully equipped metal and hydraulic workshops and paint shop, we employ skilled welders, mechanics and paint sprayers who ensure that you get a top-notch end product. The welding, hydraulics and assembly of the piling rigs and appliances are all completed here. The piling rigs and appliances are then treated in our paint shop to preserve them.





### VOORDELEN VAN DE VDH SHEETPILER – 4-DELIGE MAST:

- Range of approximately 19 metres
- Straight, fast and very accurate installation of sheet piles (up to 17 metres long)
- Compressive prestress on sheet piling
- Capacity and speed for optimum performance
- Hydraulically adjustable undercarriage
- Convenient dimensions and low transport weight
- Configurable to customer requirements
- CE certified and compliant with foundation standard NEN-EN 16228

All VDH machines are extensively and carefully tested and approved prior to delivery, are of the highest quality and meet the applicable standards. Van den Heuvel also provides maintenance and service for all the machines.



### READY FOR THE FUTURE

Van den Heuvel designs, modifies and builds various types of high-quality machines for special applications. VDH is therefore a successful partner in the foundation sector. Production and modification take place entirely in-house, using state-of-the-art equipment, with expertise developed over many years. Everything is taken care of for the customer throughout the process, from the initial request to delivery of the machine, service and maintenance. Custom solutions result in perfect basic machines, which can be adapted to the needs of the customer or project.

