

VDH PV335

In addition to selling equipment, Van den Heuvel (VDH) is perfectly capable of designing and building high-quality machines. Specially for those projects where foundation work has to be carried out on and around the rails, VDH developed the PV335. The machine has more capacity, a heavier hammer and a longer reach than the VDH-PV15.

MULTIFUNCTIONAL AND COMPACT

The VDH-PV335 is a multifunctional pile driver for carrying out various types of foundation work in railway projects. The machine can drive piles or pipes with the fitted 3 tonne piling hammer, a drill motor can be mounted for drilling work, and a vibratory hammer can be attached for driving various types of sheet piling. The PV335 is so compact that the machine can do its work while the adjacent rails remain operational. This provides increased productivity. In addition, the PV335 can be erected under high voltage lines, making it unnecessary to take the machine off the rails for piling work: very efficient!

HYDRAULIC RAILWAY WHEELSETS

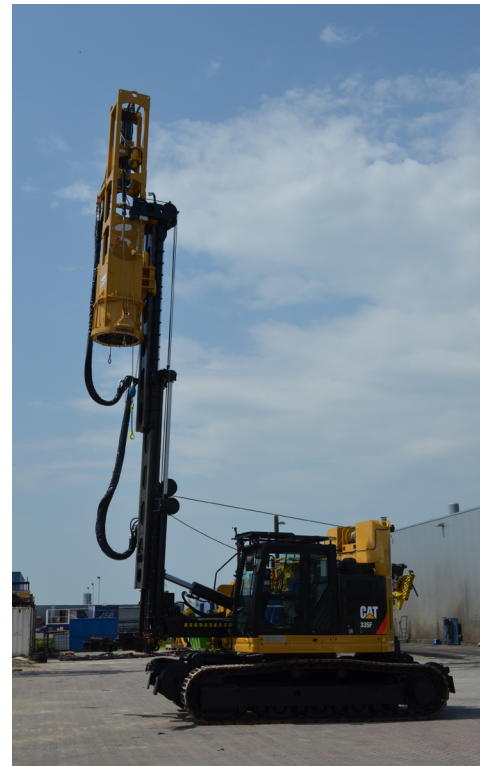
In the VDH workshop, two different types of self-propelled hydraulic railway wheelsets are mounted under the machine, enabling the PV335 to perform foundation work from the rails. An advantage of these wheelsets is that they are self-steering and one of them even includes a pendulum suspension. This makes the machine ideal for working on tracks with switches, in sharp bends and in hilly conditions. Thanks to the 60 cm wide crawler tracks, the PV335 can also be used alongside the rails. In addition to the railway wheelsets, a leader, hammer, sliding table and additional ballast are added to the machine in the workshop. The special sliding table – which can be extended further than that of the PV15 – enables the leader to operate in various positions and gives it a slightly greater reach than the PV15. The machine is equipped with an emergency provision, allowing it to be pushed or pulled by another vehicle. The machine can also be equipped with a backup generator.

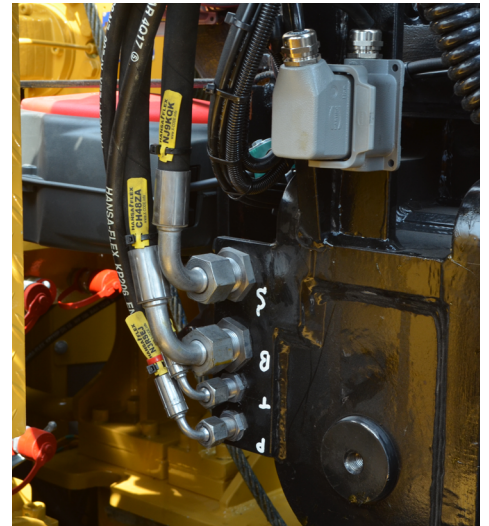
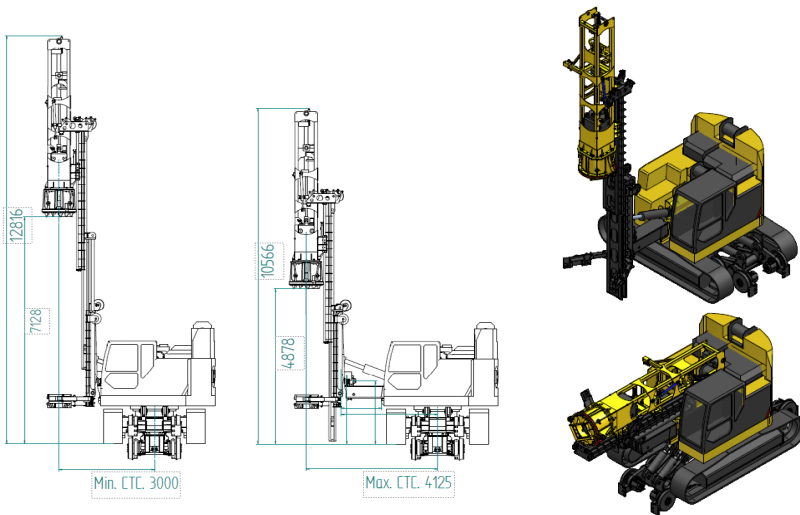
VARIOUS DRIVE CAPS

Despite its compact size, the PV335 can drive piles of various lengths up to a maximum of 7.5 metres long. This is possible due to the height-adjustable leader, specially developed by VDH. Different drive caps can also be fitted on the machine. This allows both square piles and piles with screw ends to be driven into the ground. The hydraulically rotatable adapter turns the piles exactly in the right place, making the work more efficient.

CUSTOM SOLUTIONS TO MEET CUSTOMER REQUIREMENTS

VDH, a specialist in the field of modifications in the foundation sector, recommends the most suitable solution (brand-independent) and carries out the machine conversion from start to finish. The team of skilled engineers designs, draws and calculates in accordance with the EN 16228 standard. Although all the equipment of the PV335 was designed and manufactured by VDH specifically for rail work, the machine can be configured completely according to the customer's requirements and to suit the work it will be used for.

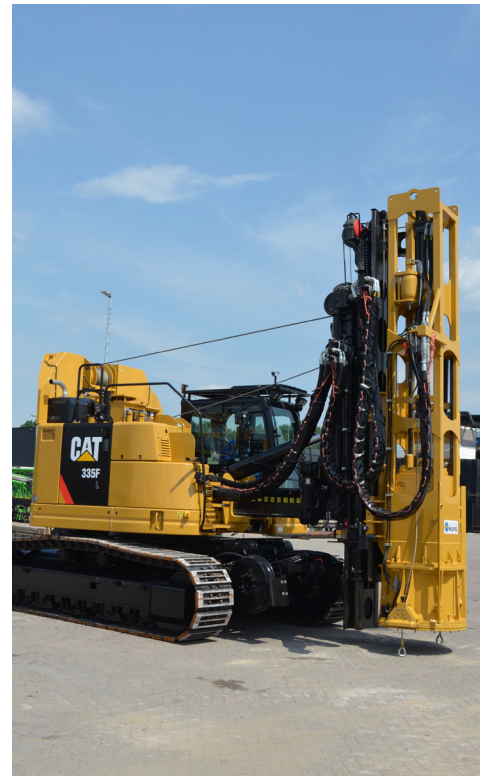




ADVANTAGES OF THE PV335:

- Suitable for work on and around the rails
- Multifunctional: piling, vibrating, drilling
- Compact, in operation and during transport
- Adjacent rails can remain operational
- Hydraulic self-steering railway wheelsets (one with pendulum suspension)
- Can be erected under high voltage cables
- EN 16228 certified

Once the machine is built, everything is carefully tested and certified (EN 16228) so it meets the established standards and requirements. The customer receives a complete package with which they can get started straight away.



READY FOR THE FUTURE

Van den Heuvel designs, modifies and builds various types of high-quality machines for special applications. VDH is therefore a successful partner in the foundation sector. Production and modification take place entirely in-house, using state-of-the-art equipment, with expertise developed over many years. Everything is taken care of for the customer throughout the process, from the initial request to delivery of the machine, service and maintenance. Custom solutions result in perfect basic machines, which can be adapted to the needs of the customer or project.

