

## VDH PD PILING RIG

In addition to selling equipment, Van den Heuvel (VDH) is perfectly capable of designing and building high-quality machines. For companies that want to carry out impact and vibratory pile driving in addition to the usual lifting activities, VDH can adapt a standard crane as a PD piling rig. This way it can be used both as a crane and as a foundation piling rig.

### CRANE AND PD PILING RIG IN ONE

In the VDH workshop, the machine is fitted with a special leader that is mounted on the jib of the crawler crane. VDH has developed a leader mount that is suitable for both tubular and lattice leaders. A special sliding table is also built onto the crane. This can be a central telescopic sliding table or a variant with two guide bars on the side of the machine. Additional hydraulic functions, control options and, optionally, additional winches are also added. Of course, a capacity calculation is carried out and, if necessary, additional ballast is fitted. As a variation of the additional counterweight, part of the ballast can be replaced by a powerpack frame or a powerpack frame can be placed on top of the counterweight.

### MANY ADVANTAGES

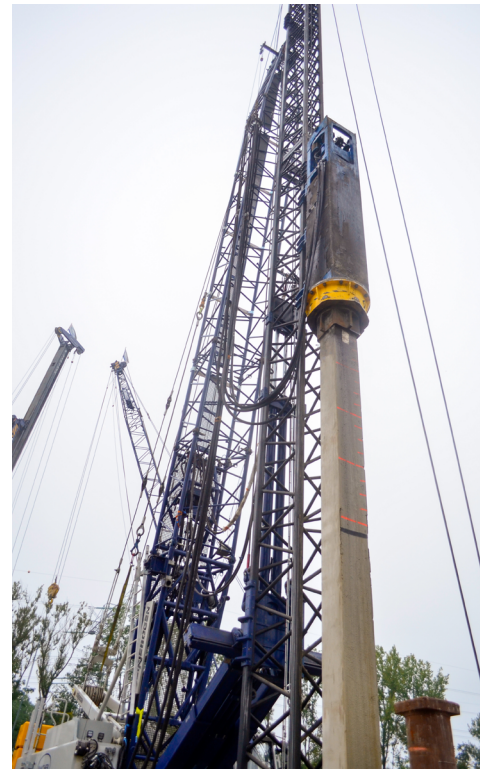
In addition to the enormous flexibility you gain when a crane can also be used as a foundation piling machine, a PD piling rig offers even more advantages. It offers tremendous range: the PD machine can operate forward- or backward-leaning, with a maximum inclination of 4:1, depending on the leader length. The fact that the leader can be lowered makes it ideal for work where scaffolding or a pontoon is used.

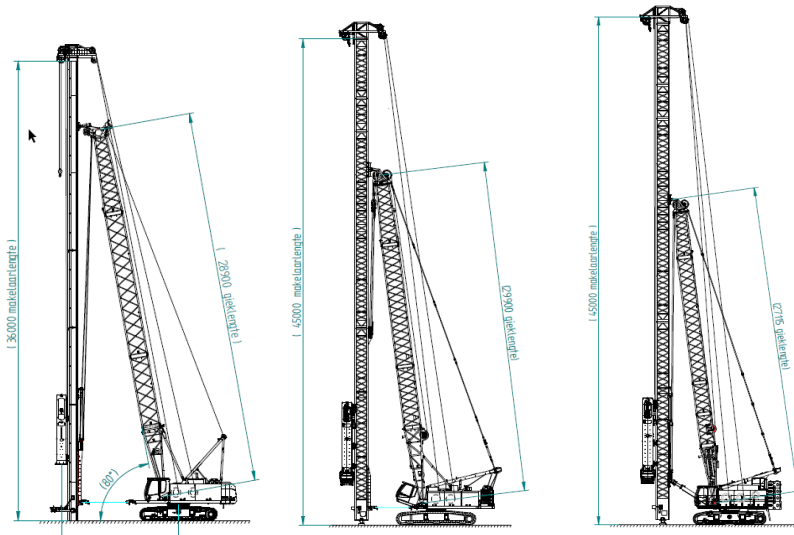
### CUSTOM SOLUTIONS TO MEET CUSTOMER REQUIREMENTS

VDH, a specialist in the field of modifications in the foundation sector, recommends the most suitable solution and carries out the machine conversion from start to finish. The team of skilled engineers designs, draws and calculates in accordance with the EN 16228 standard. And, of course, completely according to the customer's requirements and the purpose for which it will be used. The skilled staff in the workshops and paint shop create a high-quality finished product from the design – brand-independent and for each machine varying in weight class (80-250 tonnes) or leader length (36-52 metres).

### PRODUCTION IN OUR WORKSHOPS

In our fully equipped metal and hydraulic workshops and paint shop, we employ skilled welders, mechanics and paint sprayers who ensure that you get a top-notch end product. The welding, hydraulics and assembly of the piling rigs and appliances are all completed here. The piling rigs and appliances are then treated in our paint shop to preserve them.

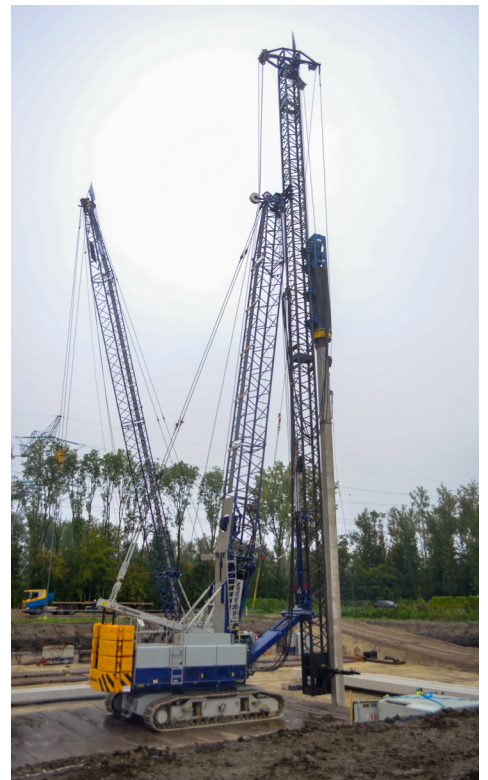




### BENEFITS OF THE VDH PD PILING RIG:

- Crane serves as a flexible, versatile foundation machine
- Hanging leader
- Special sliding table
- Lowerable leader
- Wide range
- Configurable with different tonnages and leader lengths
- Maximum inclination 4:1
- EN 16228 certified

Once the machine is built, everything is carefully tested and certified (EN 16228) so it meets the established standards and requirements. The customer receives a complete package with which they can get started straight away.



### READY FOR THE FUTURE

Van den Heuvel designs, modifies and builds various types of high-quality machines for special applications. VDH is therefore a successful partner in the foundation sector. Production and modification take place entirely in-house, using state-of-the-art equipment, with expertise developed over many years. Everything is taken care of for the customer throughout the process, from the initial request to delivery of the machine, service and maintenance. Custom solutions result in perfect basic machines, which can be adapted to the needs of the customer or project.

